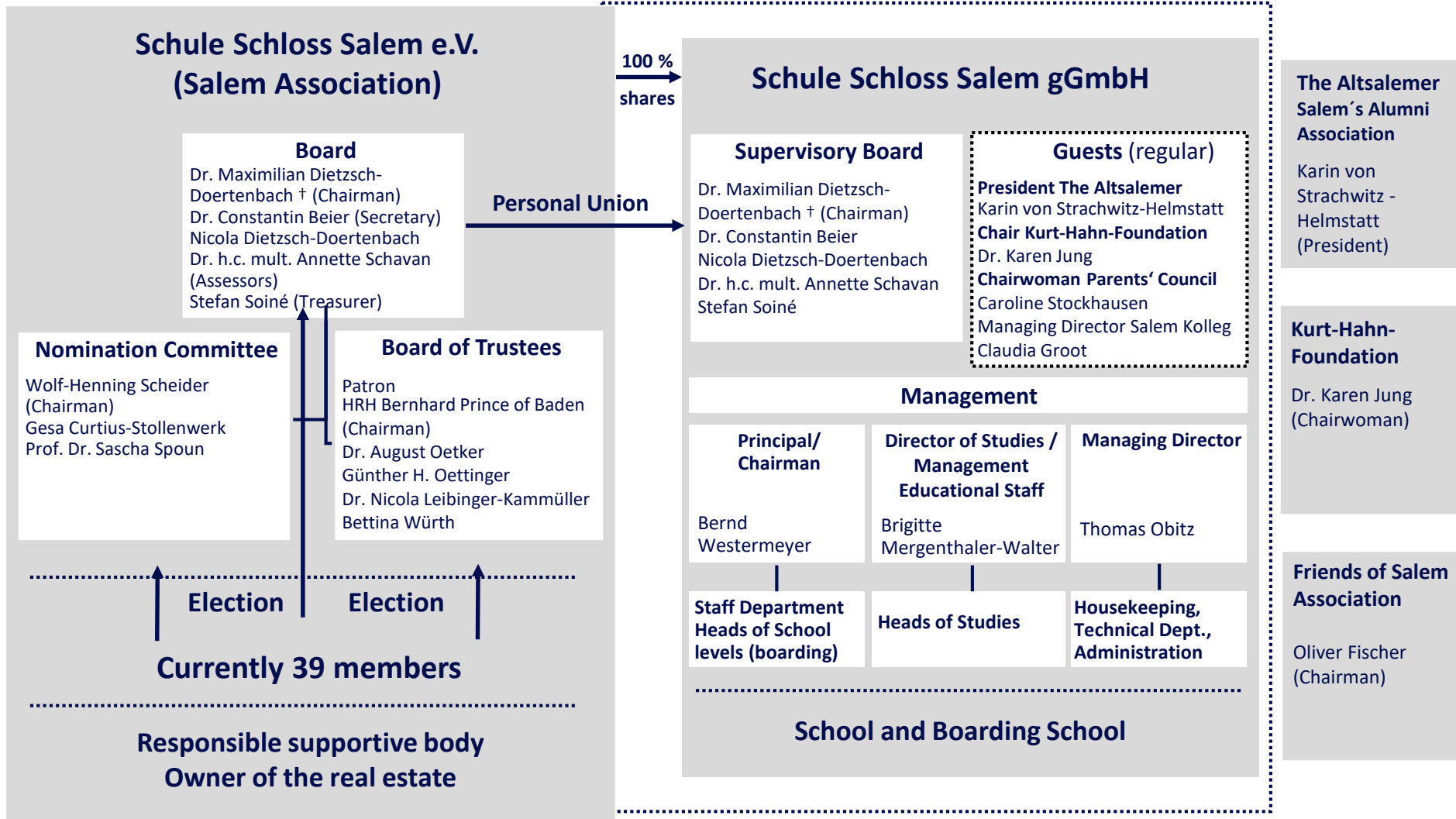


Overview Organisational Structure



Salem Association

Board

- Election period: 3 years
- Member of the Supervisory Board of the gGmbH in the personal union
- Represents the Salem Association at the Shareholders' General Meeting of the gGmbH

Nomination Committee

- 3 members
- Proposes to the meeting of members:
 - New members for the Salem Association
 - Members for the Board
 - Members for the Board of Trustees

Board of Trustees

- Members who, due to their position and reputation, support the School's objectives and advise the School's committees
- Up to 10 members (which should not be members of the Board or Supervisory Board at the same time)
- Persons who are not members of the Internatsverein can also be elected to the Board of Trustees

gGmbH

Supervisory Board

- Appoints the Management of the gGmbH
- Approves the business and finance plan as well as the strategic and actions planning
- Decides on transactions and actions which are subject to approval
- It aims for holding a meeting every calendar quarter

Management

- Representation of the gGmbH both internal and external
- Operative Management of the School
- Further development of the School
- Holds meetings as a rule on a weekly basis

Steering Committee

- Up to 5 additional members are appointed by the Management
- Fulfillment of the tasks assigned by the Management
- Preparation of Management resolutions
- Coordination of the educational approach
- Holds meetings as a rule on a weekly basis